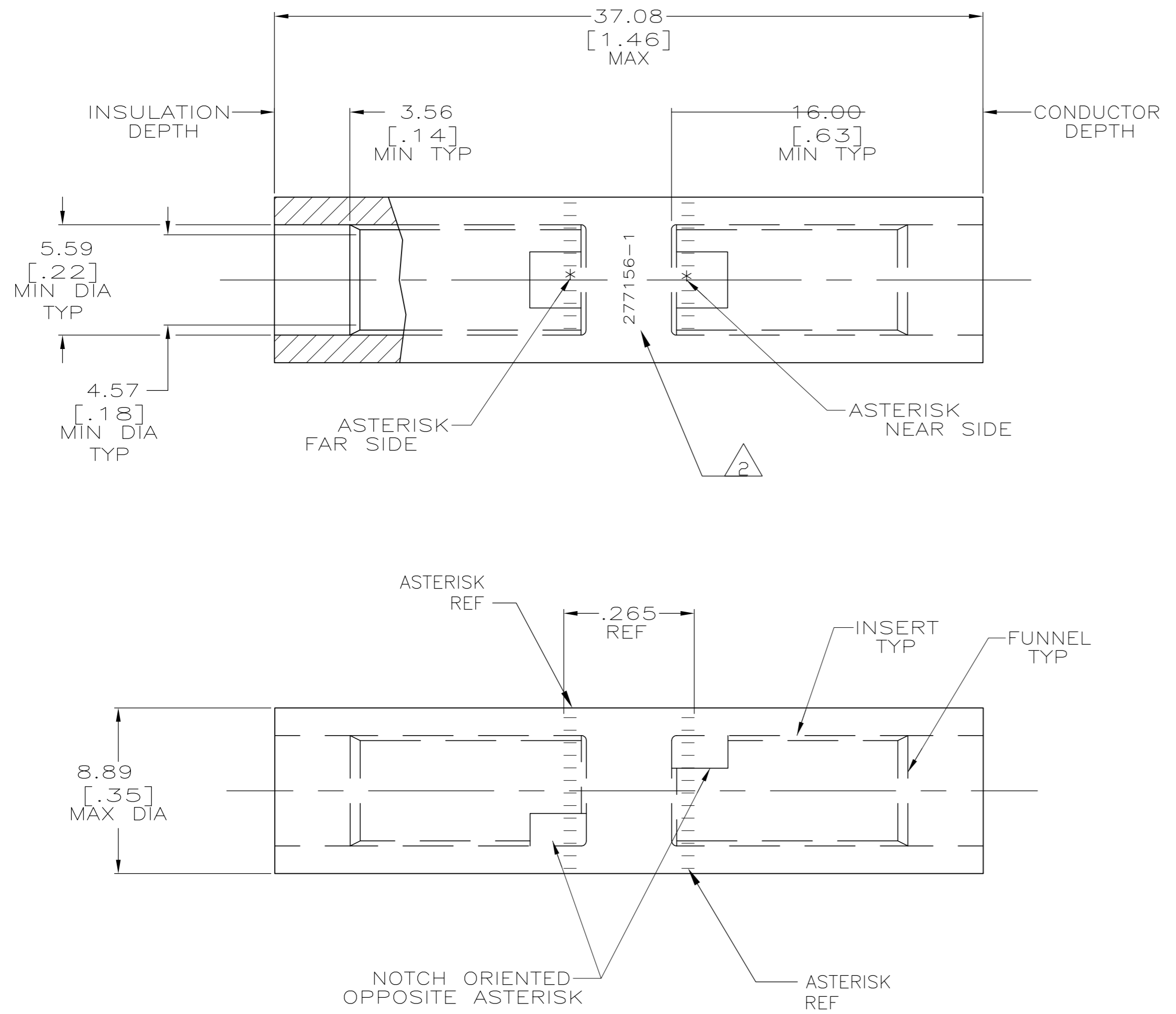


THIS DRAWING IS UNPUBLISHED. RELEASED FOR PUBLICATION  
 © COPYRIGHT BY TYCO ELECTRONICS CORPORATION. ALL RIGHTS RESERVED.

LOC	DIST	REVISIONS					
		P	LTR	DESCRIPTION	DATE	DWN	APVD
G	86		M	REV PER ECR 08-004875	26FEB08	JR	MS



1 WIRE INSULATION: 4.62[.182] - 5.08[.200] DIA  
 2 STAMP "277156-1 AMP 8AL-10CU"  
 LOCATE APPROX AS SHOWN

SPLICE: COPPER ASTM B-187 TIN PL. PER ASTM B 545 0.00381 [.000150] MIN THK INSERT & FUNNEL: BRASS ASTM B36 NICKEL PL SAE AMS QQ-N-290A, DATED JULY 2000, 0.00254 [.000100] MIN THK	277156-1
---	----------

THIS DRAWING IS A CONTROLLED DOCUMENT.		DWN DK SCHRUM 7/5/89	Tyco Electronics Corporation Harrisburg, Pa 17105-3608	
DIMENSIONS: MM [ INCHES ]		CHK MS FEHER 5/1/90	NAME WIRE SPLICE, BUTT, COPALUM, SEALED, 4.8mm2 [10] COPPER 8.6mm2 [8] ALUMINUM	
TOLERANCES UNLESS OTHERWISE SPECIFIED:		APVD MJ SPICER 5/1/90	SIZE CAGE CODE DRAWING NO RESTRICTED TO	
0 PLC ± -		PRODUCT SPEC 108-11011	SCALE 5:1 SHEET 1 OF 1 REV M	
1 PLC ± -		APPLICATION SPEC 114-2134		
2 PLC ± -		WEIGHT 10.2 GRAMS		
3 PLC ± -		CUSTOMER DRAWING		
4 PLC ± -				
ANGLES ± -				
FINISH SEE TABLE				